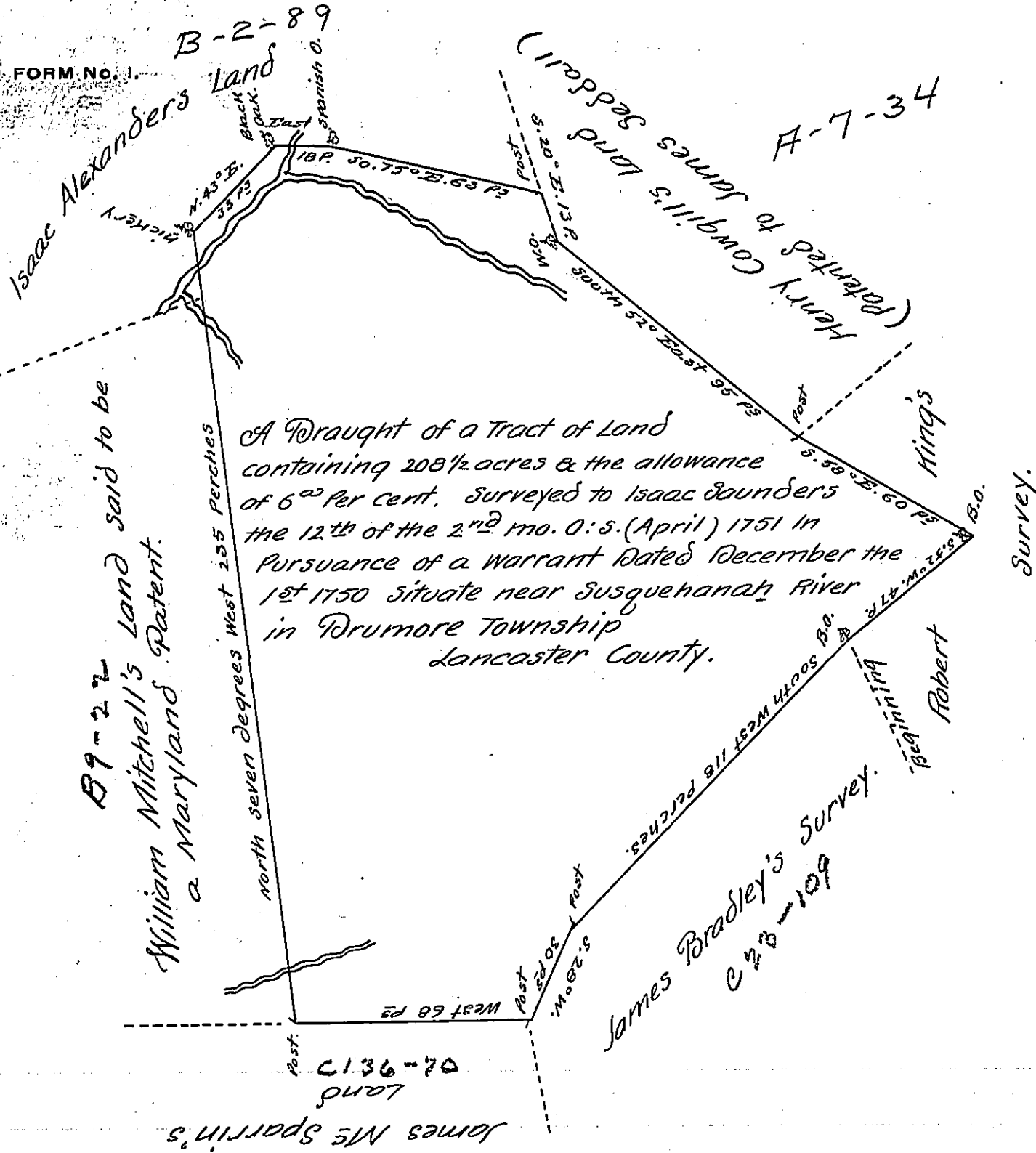


FORM NO. 1

B-2-89

A-7-34



The above survey Begins at a Black Oak being also a corner of a survey made at the same time for Robert King & runs thence by James Bradley's Land South West 118 perches to a Post & C^o as per the above Draught. Scale of 50 P. to an Inch. 30th 12 mo. 1760.

George Churchman. —

IN TESTIMONY that the above is a copy of the original remaining on file in the Department of Internal Affairs of Pennsylvania, made conformably to an Act of Assembly approved the 16th day of February, 1833, I have hereunto set my Hand and caused the Seal of said Department to be affixed at Harrisburg, this thirteenth day of December 1906

Isaac R. Brown
Secretary of Internal Affairs.